

ILCS *Industrial Liquid Control System*

Chemical Dispensing and Control for Sanitation in the Food & Beverage Processing Industry.

The ILCS is a multiple chemical distribution system designed to optimize in-plant cleaning chemical control. This system completely automates the dispensing of chemical and records critical usage data. The ILCS can control chemical usage by areas in the plant, by specified equipment to be cleaned, or by each sanitation worker that uses the system. ILCS promotes effective and safe allocation while providing sanitation managers an invaluable monitoring tool.

Features & Benefits:

- Automates Chemical Dispensing
- Daily User Log With Date and Time
- Controls Costs
- Accumulates Chemical Usage Data
- Eliminates Unsafe Chemical Transferring
- Fifty Formula Capability
- Windows Compatible PC Software
- Easy To Operate

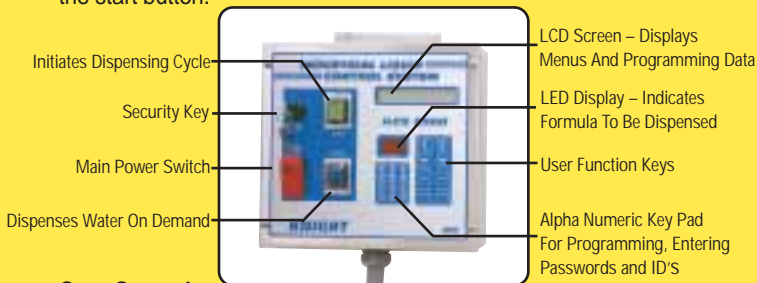
Advanced Microprocessor Features:

Automates Chemical Dispensing

An intuitive user control allows sanitation workers to operate the system with a minimum of training and effort. The operator simply enters a user ID code, selects the appropriate formula number and presses the start button.



Reliable Peristaltic Pumps or High Output Air Operated Double Diaphragm Pump(s)



Initiates Dispensing Cycle
Security Key
Main Power Switch
Dispenses Water On Demand

LCD Screen – Displays Menus And Programming Data
LED Display – Indicates Formula To Be Dispensed
User Function Keys
Alpha Numeric Key Pad For Programming, Entering Passwords and ID'S

Cost Control

At the push of a button, this system dispenses concentrated cleaners in precise measured amounts into geri cans or other portable containers. The ILCS system can be used to simply transfer each product to a container or to blend any combination of up to eight products and water. The ILCS can be programmed to deliver up to fifty chemical formulations tailored to the specific requirement of each cleaning task. Fifty user ID codes prevent unauthorized use of the system.

Data Management

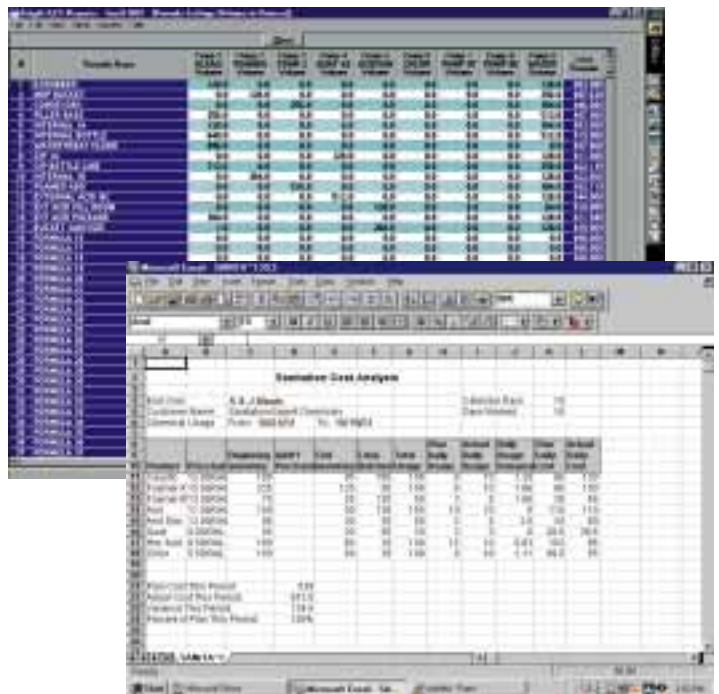
All product usage is recorded as products are used. Usage reports include product cost, consumption, batch tracking and setup. This critical information will help management gain control of costs and provide improved sanitation.

Worker Safety

The ILCS system promotes worker safety by limiting the users' exposure to corrosive cleaners used for sanitation. Reliable, self priming peristaltic pumps transfer cleaning products safely and efficiently. The simplicity of the system allows even unskilled employees to use it with minimal training.

ILCS Windows compatible software connects the Sanitation Manager directly to the ILCS system.

- Track chemical usage by each sanitation worker
- Verify chemical usage in all areas of the plant
- Remote connection via modem
- Export sanitation reports to Excel

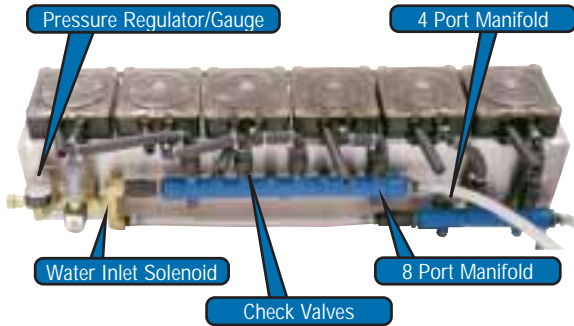


ILCS *Industrial Liquid Control System*

Options For The ILCS System

Integrated Flush System

The ILCS features a dual manifold design to isolate incompatible chemicals. Chemical supplies are protected by a check valve mounted between the peristaltic pump and the manifold. A pressure regulator and pressure gauge assembly is mounted on the incoming water line to control flush water pressure.



Liquidtrol Series Air Pump Control & Air Operated Double Diaphragm Pump



The APC-200 operates as an interface to control Liquidtrol style air pumps from the ILCS. Built-in air solenoid, filter/dryer, regulator and gauge with electrical interface provide a simple remote or local installation of air pumps.

3 Way Valve

Allows automatic flushing of chemical residual to drain. Prevents cross contamination



Stainless Steel Shelf

Rugged container shelf with adjustable rack and drip tray



Ordering Information

ILCS Systems, Peristaltic Pumps, Air Pump Controls & Air Operated Double Diaphragm Pumps

| Model | Part No. | Description |
|------------|------------|---|
| ILCS-6900 | 7551000-01 | Six Pump ILCS. Includes Cabinet, Controls, and Dual Manifold Flushing Systems, 12 Ports Total. System Can Control Up To 8 Pumps. Peristaltic Pumps Must Be Specified From The List Below. |
| ILCS 6900X | 7551009 | ILCS w/o Pumps, w/o water flush. Includes User Interface and Pump Controller Unit. System Designed For Applications of Air Operated Pumps (AOP). AOP Must Be Specified From The List Below. |
| ILCS-6900 | 7551013-01 | ILCS-6900 115 VAC w/one 3 Way Valve. |
| ILCS-6900 | 7551014-01 | ILCS-6900 115 VAC w/two 3 Way Valve. |
| KP-9130X | 8600127-01 | 900 series pump, 130 rpm, 148 oz./minute (4.8 l/min). Mounts to ILCS cabinet. |
| KP-9270X | 8600128-01 | 900 series pump, 270 rpm, 226 oz./minute (6.7 l/min). Mounts to ILCS cabinet. |
| APC-200 | 7641060-01 | Air Pump Control, Single Pump, 110 VAC 50/60 Hz w/built-in regulator, pressure gauge, air solenoid and filter/dryer. Interfaces ILCS to Air Pump. |
| APC-200 | 7641061-01 | Air Pump Control, Double Pump 110 VAC 50/60 Hz w/built-in regulator, pressure gauge, air solenoid and filter/dryer. Interfaces ILCS to Air Pump. |
| LAOP-25C | 7640474 | 1/4" Air Operated Double Diaphragm Pump w/Stainless Steel Enclosure, 1/2"Fittings, Suction Check Valve Assy. 0-4 gal/min (0-15 Ltrs/min) |
| LAOP-25B | 7640612 | 1/4" Air Operated Double Diaphragm Pump w/Stainless Steel "L" Bracket, 1/2"Fittings, Suction Check Valve Assy. 0-4 gal/min (0-15 Ltrs/min) |
| LAOP-50C | 7640475 | 1/2" Air Operated Double Diaphragm Pump w/Stainless Enclosure, 1/2"Fittings,Suction Check Valve Assy. 0-14 gal/min (0-53 Ltrs/min) |
| LAOP-50B | 7640613 | 1/2" Air Operated Double Diaphragm Pump w/Stainless Steel "L" Bracket, 1/2"Fittings, Suction Check Valve Assy. 0-14 gal/min (0-53 Ltrs/min) |

Options

| Model | Part No. | Description |
|--------------|-----------|---|
| 3WV-6000 | 2210013 | 3-way Air Operated Diaphragm Valve w/Air Solenoid for automatic flushing to drain. Retrofits to ILCS-6900 Pump Case. |
| 2WV-6000 | 1600955 | 2-Way Air Operated Diaphragm Valve for "Point of Dispense" Anti-Siphon Protection w/Mounting Bracket, and Fittings For Air Operated or Peristaltic Pumps. Fitting size for 1/2" I.D. Tubing. Operates with Air Pressure |
| Expert 6000I | 7681067 | Windows Based Software/Hardware Package, with RM-6000I and cables |
| KP-9270I | 857785-01 | KP-9270, 115V/60Hz Pump with Watertight Case. 226 oz/min (6.7L/min) |
| CS-5000 | 7541100 | Stainless Steel Container Shelf for 2, 2.5 or 5 Gallon Containers |
| - | 0700250 | Pistol Grip For 3/4" O.D. Tubing |

KNIGHT LIMITED WARRANTY

Knight controls and pump systems are warranted against defects in material and workmanship for a period of ONE YEAR. All Electronic Control Boards have a TWO YEAR warranty. Warranty applies only to the replacement or repair of such parts when returned to the factory with a KRA number, freight prepaid and found to be defective upon factory inspection. Rubber and synthetic rubber parts such as "O" rings, diaphragms, squeeze tubing and gaskets are considered expendable and are not covered under warranty. Warranty does not cover liability resulting from performance of this equipment nor the labor to replace this equipment. Product abuse or misuse voids warranty.

DISTRIBUTOR

| Knight Headquarters | Georgia Branch | Canada Branch | UK Branch | Australia Branch | N. Europe Branch | S. Europe Branch | Asia Branch |
|-------------------------|-------------------------|-------------------|--------------------|--------------------|-------------------|--------------------|--------------------|
| Toll Free (800)854-3764 | Toll Free (800)241-7789 | Tel (905)542-2333 | Tel 44 1293 615570 | Tel 61 2 9725 2588 | Tel 31 53 4285800 | Tel 34 936 342 130 | Tel 82 2 3481 6683 |
| Tel (949)595-4800 | Tel (770)787-9400 | Fax (905)542-1539 | Fax 44 1293 615585 | Fax 61 2 9725 2025 | Fax 31 53 4285809 | Fax 34 936 643 477 | Fax 82 2 3482 5742 |
| Fax (949)595-4801 | Fax (770)787-1155 | | | | | | |
| www.knightequip.com | | | | | | | |